



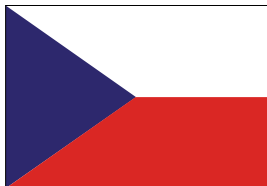
JAN EVANGELISTA PURKYNĚ UNIVERSITY IN ÚSTÍ NAD LABEM



Czech Republic



FOREIGN STUDENT GUIDE



Academic Year 2009/2010



■ University Structure	5
■ A Message from our Rector	7
■ A glimpse of the history of our University	10
■ Facts and Figures	11
■ Components of the J. E. Purkyně University in Ústí nad Labem	13
■ ECTS Information Package	22
■ Studies at UJEP – Main Regulations	25
■ Structure of Study Programmes Taught in Czech	31
■ Structure of Study Programmes Taught in English/German	42
■ Czech Language Course for Foreigners	53
■ Contacts	61
■ Ústí nad Labem City and the Ústí Region	65
■ Czech Republic/Basic Information	68



**Publisher:**

J. E. Purkyně University in Ústí nad Labem

External Relations Office

Hoření 13

CZ - 400 96 Ústí nad Labem

Phone: +420 475 282 277

Fax: +420 472 772 781

www.ujep.cz/en

© J. E. Purkyně University in Ústí nad Labem 2009

All information contained in this brochure is subject to change.

The J. E. Purkyně University (UJEP) in Ústí nad Labem reserves the right to alter any details presented in this Guide without notice. The UJEP cannot accept any liability arising from changes, errors or omissions.



Education and Culture



Supported by the European Commission within LLP/
ERASMUS



University Structure
A Message from our Rector
A glimpse of the history of our
University, Facts and Figures



RECTOR

Rector's Board

Scientific Board

Management Board

Senate

Vice Rector for Science

Vice Rector for Education

Vice Rector for External Relations

Vice Rector for Development and IT

University Bursar

Faculty of Art and Design
Dean
+
Vice-deans

Faculty of Education
Dean
+
Vice-deans

Faculty of the Environment
Dean
+
Vice-deans

Faculty of Philosophy
Dean
+
Vice-deans

Faculty of Production Technology and Management
Dean
+
Vice-deans

Faculty of Science
Dean
+
Vice-deans

Faculty of Social and Economic Studies
Dean
+
Vice-deans

Institute of Health Studies
Director
+
Deputy Directors





Come and study at the university named after the world famous scientist, Jan Evangelista Purkyně in Ústí nad Labem. Link one phase of your life to the Czech Republic – the heart of Europe.

There comes a time in every individual's life when a serious decision must be made about the future. You may be at that point if you:

- will be completing your secondary education and are choosing the university you will attend and are considering studying abroad,
- are already university students and would like to spend one or two semesters abroad,
- are already university students and would like to gain several weeks experience abroad,
- are university professors and would like to travel abroad to teach for several days or weeks,
- are university professors and would like to change your place of employment and travel abroad to work.

If so, please read all of this informational material about the J. E. Purkyně University (UJEP) carefully and when you have done so, decide whether this university has captured your interest and you wish to consider the option of studying in the Czech Republic. Every change in life is very difficult and making the decision to travel abroad is twice as hard. But you can be certain that you will not regret making the decision to travel to Ústí nad Labem to UJEP.

The university we invite you to visit is located in a North Bohemian industrial town, located in the beautiful valley of the river Elbe. This environment creates an excellent



base for natural science, environmental and also economic fields of study. Equally, the varied history of the region and the abundant cultural and social opportunities create a good basis for development of the social sciences and arts.

UJEP is one of the chief agents supporting and significantly influencing development of the whole region – from the economic, social and cultural aspects. By training young, professionally educated people, the university supports regional economic revitalization and development.

The existence of a strong university like UJEP in the region also motivates entrepreneurs to establish and develop new enterprises, because they have a stable source of university-educated employees. And of course this is also linked to the fact that new companies provide new employment opportunities for graduates and motivate young people to remain in the region. At the same time companies are guaranteed potential support of their research and these companies in turn create a potential for the university to commercialize the results of its research and development.

You can expect to make many new friends in a pleasant university environment, which will offer you cultural and sports opportunities, as well as intellectual development. You can also look forward to beautiful natural scenery and many new living and employment opportunities. You will become part of one large academic community, which will give you the opportunity of not only being a simple consumer of information, but also demonstrating your abilities, what sort of person you are and whether you are capable of using the offered opportunities to the best possible extent.

Before you make a decision, and as one who has also spent part of my life abroad, I would like to offer you "my" 10 best reasons for spending at least one stage of your life at the J. E. Purkyně University in Ústí nad Labem:



1. A young, open, dynamically developing university.
2. A wide range of study programs and fields of study.
3. Strategic location - between Prague (the capital city of the Czech Republic) and Dresden (the capital city of Saxony).
4. The beautiful surrounding area, a protected nature reserve, Porta Bohemica.
5. Interesting history of the region, a number of preserved historical monuments.
6. Excellent conditions for students who enjoy sports or are artistically inclined.
7. Excellent cultural attractions on both the Czech and German side of the border.
8. Lower living expenses in comparison to other regions, quality accommodation with broadband Internet access.
9. A wide range of opportunities for acquiring a social grant.
10. The opportunity of acquiring paid residency, part-time employment.

I hope that all those of you who decide to visit Ústí nad Labem briefly or for an extended period like it being among us so much that you always enjoy returning to your Ústí Alma Mater.

Your rector Iva Ritschelová





The University in Ústí nad Labem bears the name of Jan Evangelista Purkyně (1787–1869), the famous Czech from the town of Libochovice, who is considered to be one of the most significant natural scientists and physicians.

Higher education in Ústí nad Labem has 55 years of tradition. In September 1954 the Pedagogic High School of Ústí nad Labem was founded as the first teacher-training high school, and the second high school in the Northern Bohemia region.

A government decree of September 1959 established a new Pedagogic Institute in place of the Pedagogic High School, whose aim was to organize the complex education of elementary school teachers. Another decree of August 1962 removed pedagogic institutes from the authority of Regional People's Committees and related them directly to the Ministry of Education and Culture. This event granted the highest level of independence and prestige to the Institute.

The next significant development was the establishment of the Pedagogic Faculty in 1964. Since that time the Pedagogic Faculty has become the only training institution in the region for primary (and later secondary) schoolteachers. In 1977 – there were significant changes in both the content and extent of activities. Under the new educational system – a unified five-year preparation course was introduced for middle-school teachers (5th–12th grade), placing the Pedagogic Faculty on the level of other university faculties. A four-year course for 1st–4th grade elementary school teachers was



also available. The new higher education legislation permits organization of state viva examinations at the faculty. Students who achieved the faculty's high school diploma could pass a state viva examination and acquire the degree of Doctor of Pedagogy (PaedDr.).

The political and social changes in the country after November 1989 significantly affected the life of the Pedagogic Faculty. The Ústí nad Labem region was badly affected at that time by mining and heavy industry, and was unattractive to professionals from other regions. On the contrary, due to bad environmental conditions, there was a heavy outflow of qualified workers. Under these circumstances, faculty members and staff realized that teacher training should be incorporated into the wider framework of professional education, and as a result, the Jan Evangelista Purkyně University in Ústí nad Labem was established according to the decree of the Czech National Council of 9 July 1991, which took effect on 28 September 1991.

At the time of its foundation in 1991 the University consisted of three faculties (Faculty of Education, Faculty of Social & Economic Studies and Faculty of the Environment) and two Institutes (Institute of Slavonic & German Studies and Institute of Roma Culture Studies). In September 1993 the Institute of Artistic Culture was established: this was transformed into the Faculty of Art & Design in 2000. In Autumn 1988 the Department of Technical Education of the Faculty of Education became the Institute of Production Technology & Management. In 2003 the Institute of Health Studies was founded. Resulting from the transformation of the Faculty of Education, two new institutes (Institute of Science, later the Faculty of Science, and Institute of Humanities) appeared in 2005. The youngest University branches are the Faculty of Philosophy and the Faculty of Production Technology & Management (2006).



■ Faculties :	7
■ Institutes:	2
■ Departments:	48
■ Centres:	5
■ Adjusted number of academics:	465
■ Adjusted number of non-academics:	346
■ Enrolled Students:	10,961
■ Students graduating annually:	1.400
■ Degrees awarded:	BSc (Bc.), MSc (Ing.), PhD
■ Number of BSc study programmes/fields taught in Czech:	29/80
■ Number of MSc study programmes/fields taught in Czech:	24/92
■ Number of PhD study programmes/fields taught in Czech:	8/10
■ Number of BSc study programmes/fields taught in English:	1/1
■ Number of MSc study programmes/fields taught in English:	1/1
■ Number of PhD study programmes/fields taught in English/German:	2/2
■ Erasmus outgoing students:	206 (Academic year 2007/2008)
■ Erasmus incoming students:	57 (Academic year 2007/2008)



**Components
of the J. E. Purkyně University
in Ústí nad Labem
ECTS Information Package**



Faculty of Art and Design (FUD)

www.fud.ujep.cz/en

1. KUU Department of Applied Art
2. KDE Department of Design
3. KEO Department of Electronic Image
4. KVP Department of General Preparation
5. KDT Department of History and Theory of Arts
6. KFO Department of Photography
7. KVK Department of Visual Communication





Faculty of Education (PF)

www.pf.ujep.cz/en

1. CJP Centre for Foreign Languages
2. CPP Centre for Pedagogic Practice
3. CR Centre of Intercultural Education
4. CCV Life Long Learning Centre
5. KVV Department of Art Culture
6. KH1/KV1 Department of Teaching Through Art
7. KBO Department of Czech Language and Literature
8. KAJ Department of English
9. KM1 Department of Mathematics
10. KHV Department of Music
11. KPG Department of Pedagogy
12. KTV Department of Physical Training
13. KPR Department of Primary Education
14. KB1 Department of Primary Language Education

15. KPS Department of Psychology
16. OMP Department of Multimedia Resources
17. OSL Section of Slavonic Studies





Faculty of the Environment (FŽP)

www.fzp.ujep.cz/en

1. KIG Department of Geoinformatics
2. KPV Department of Natural Sciences
3. KSPV Department of Social Sciences
4. KTEV Department of Technical Sciences





Faculty of Philosophy (FF)

www.ff.ujep.cz/en

1. KGER Department of German
2. KHI Department of History
3. KSV Department of Political Studies and Philosophy
4. FJC Language Centre of FF
5. ÚSGS Institute of Slavonic & German Studies





Faculty of Production Technology and Management (FVTM)

www.fvtm.ujep.cz/en

1. KAD Department of Applied Disciplines
2. KMED Department of Economics and Enterprise Management
3. KSM Department of Machinery and Mechanics
4. KTMI Department of Technology and Material Engineering





Faculty of Science (PřF)

www.sci.ujep.cz/en

1. KBI Department of Biology
2. KCH Department of Chemistry
3. KFY Department of Physics
4. K GEO Department of Geography
5. KI Department of Informatics
6. KMA Department of Mathematics of PřF
7. KPRF Workplace for the Faculty of Science





Faculty of Social and Economic Studies (FSE)

www.fse.ujep.cz/en

- | | | | |
|---------|---------------------------------------|---------|--|
| 1. KEP | Department of Business Administration | 5. KCJ | Department of Foreign Languages |
| 2. KOSL | Department of Business Studies | 6. KIT | Department of Information Technology |
| 3. KEK | Department of Economics | 7. KPP | Department of Law and Political Studies |
| 4. KFU | Department of Finances and Accounting | 8. KMS | Department of Mathematics and Statistics |
| | | 9. KRLR | Department of Regional and Local Development |
| | | 10. KSP | Department of Social Work |





Institute of Health Studies (ÚZS)

www.uzs.ujep.cz/en

1. KOS Department of Nursing
2. KPA Department of Obstetric Assistance
3. KFE Department of Physiotherapy and Ergotherapy





Contact

UJEP University advisory centre

Hoření 13, 400 96 Ústí nad Labem

Tel.: +420 475 282 343

<http://www.ujep.cz/en/welcome.html>

Mgr. Šárka Machátová (upc@rt.ujep.cz, sarka.machatova@ujep.cz)

Mgr. Veronika Bambulová (upc@rt.ujep.cz, veronika.bambulova@ujep.cz)

General information

The average cost of living for students in Ústí nad Labem is approximately 300 EUR (7,000 CZK) per month (including accommodation in the halls of residence, meals at a students' canteen and other costs). The cost is higher at the start of studies (or the beginning of a term) – since one should to pay for a student card, a city transport card, library registration, etc. (see below).

Food

A lunch at the student canteens Klíšská or Hoření with a choice of 2 kinds of soup, 4 main courses and 1 salad costs CZK 30.90 for UJEP students (the price includes soup, a main course or salad, and tea). It is possible to order the individual courses separately. Lunch must be ordered at least a day ahead using either the chip card or on-line order. The chip card issue fee is CZK 60.

More at <http://skm.ujep.cz/>



Accommodation

At present, the price of accommodation at the UJEP Halls of Residence does not exceed CZK 2,600 a month. The current price list is available at <http://skm.ujep.cz> → "Informace o ubytování" → "Ceník ubytování studentů".

Student card

The student card is issued in the form of a chip card, available in two versions:

- a) Without an ISIC licence: free
- b) With an ISIC licence (only for students of full time study): 120 CZK/year

For foreign students studying within the Erasmus programme, only the card without an ISIC licence is available.

More at: karty@rt.ujep.cz

Town public transport

Student voucher with special rates for students under 26 is available on presentation of a student chip card to the Dopravní podnik Ústí nad Labem (Ústí nad Labem public transport company).



Student voucher (for students under 26)

Validity	Price
7 days	85 CZK
15 days	120 CZK
30 days	205 CZK
90 days	475 CZK

Citizen voucher (persons over 26)

Validity	Price
7 days	130 CZK
15 days	230 CZK
30 days	410 CZK
90 days	1 060 CZK
180 days	1 985 CZK
360 days	3 710 CZK

Tickets for individual journeys (transfer ticket, full-price)

Validity	Price
30 minutes	15 CZK <i>(bought from driver 18 CZK)</i>
60 minutes	19 CZK
24 hours	65 CZK

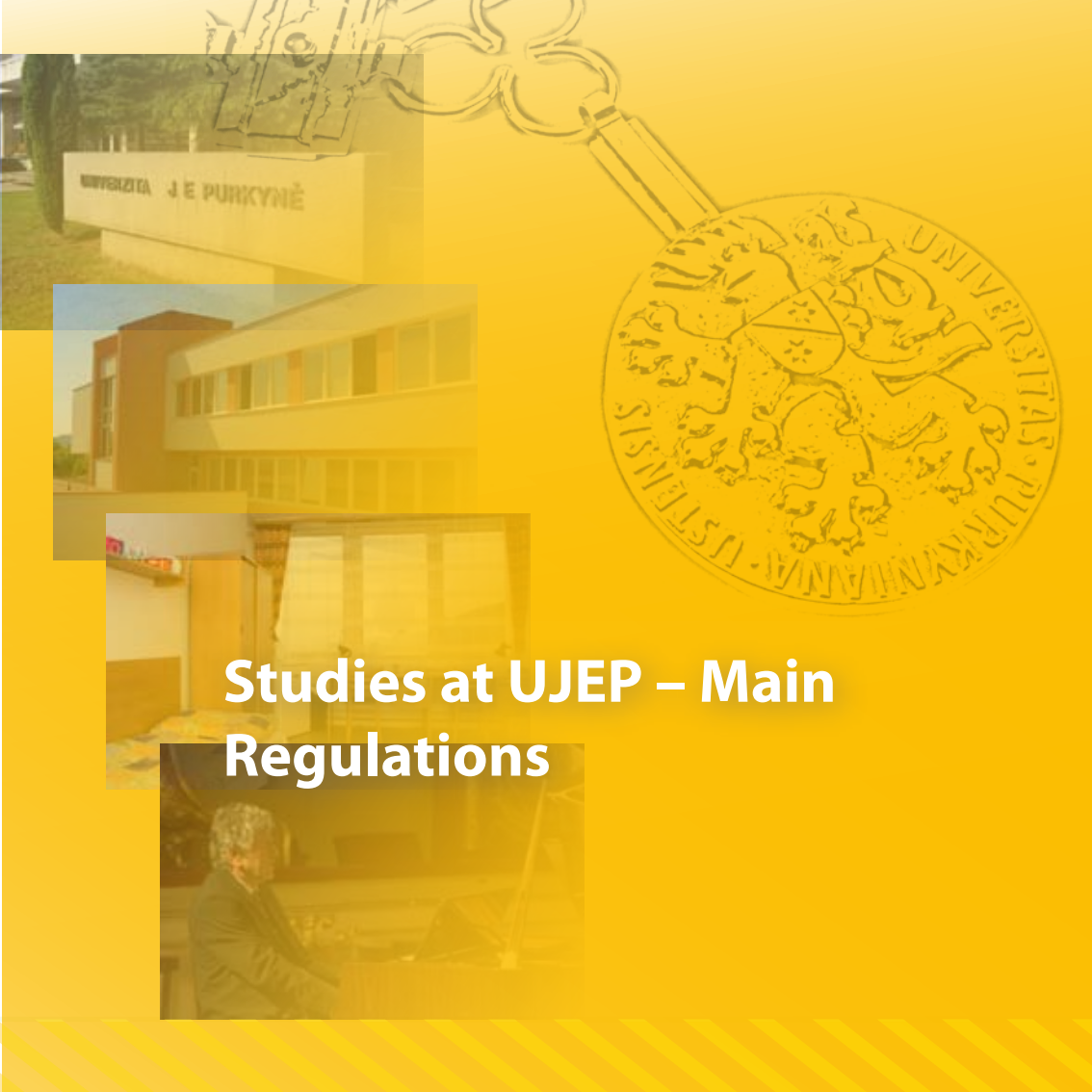
Library fee

The student registration fee at the individual UJEP libraries ranges between 0 and 100 CZK (valid for the whole time of study).

More at <http://www.ujep.cz> in "Podle činností" → "Knihovna"

The student registration fee at the Severočeská vědecká knihovna (North Bohemian Research Library), Ústí nad Labem is 50 CZK a year.

More at www.svkul.cz



UNIVERSITA J E PURKYNĚ



Studies at UJEP – Main Regulations





1. UJEP components provide university education within the scope of study programs accredited by the CZ Ministry of Education, Youth and Physical Education. Bachelor's study programs predominate. Doctoral study programs are accredited at the Faculty of Philosophy, the Faculty of Art and Design, The Faculty of Production Technology and Management, the Education and Science Faculties. The UJEP Study and Examination Rules specify the conditions for studies in bachelor's and master's study programs.
2. Bachelor's study programs are of a standard duration of 3 or 4 years, they are practically focused and form the basis for potential subsequent studies in follow-on master's programs. Graduates acquire a university diploma with the title "Bc."
3. Follow-on master's studies take 2 years, they enable improvement of theoretical knowledge and develop creativity. Graduates acquire a university diploma with the title "Mgr." or "Ing." – according to the field of studies.
4. Doctoral study programs are three years or four years in duration, they focus on scientific research and independent creative work. Graduates acquire a university diploma with the title "Ph.D."
5. The Academic year begins in the second half of September of the calendar year 200x and ends in the first half of September 200x+1. The Academic year is divided into a winter and summer semester. Each semester is made up of a teaching period (usually 14 weeks) and examination period (usually 5 weeks). The last semester of the bachelor's and master's programs is shortened (usually 10 weeks).
6. Studies take place in attendance and combined form, tuition most usually takes place in the form of lectures, seminars and tutorials. Tutorials and seminars are usually obligatory for students. Combined studies are



intended for employed students and take the form of several multiple-day education courses.

7. Foreign students are only accepted for attendance studies.
8. The basic unit of the study program is a subject of study. The study program classifies subjects according to their status as:
 - a) obligatory subjects, these must be taken to graduate from the relevant study program,
 - b) compulsory optional subjects, which are part of the module from which a minimum number of subjects must be taken, or a minimum number of credits must be acquired, to graduate from the relevant study program,
 - c) elective subjects, these are other subjects from the relevant study program.
9. UJEP uses the credit system, which is based on the principles of the European Credit Transfer System (ECTS). The recommended annual study plan is worth 60 credits, which are proportionately divided among the subjects in this plan with regard to the amount of study necessary for taking these subjects.
10. The credit tests and examinations, which the student takes and acquires credits for in subjects registered for the given academic year, are a method of verifying studies. The subject may be registered a maximum of twice during the study program (each registration allows a maximum of 3 attempts). A state bachelor's examination may only be applied for after 180 credits are acquired, application for the follow-on master's program final examination is conditional on acquisition of 120 credits).



11. The allocated number of credits is not dependant on how well the student passes the relevant subject. How well the student does in the subject is expressed by classification of the examination:
 - a) excellent or 1 (grade A),
 - b) very good or 2 (grade B–C),
 - c) good or 3 (grade D–E),
 - d) failed or 4 (grade F).
12. Progress to the next year of studies is specified by the UJEP Study and Examination Rules, for instance in specific study programs advance to the second year of studies is conditional:
 - a) in the field of arts on acquisition of at least 54 credits,
 - b) in the field of technical sciences on acquisition of at least 30 credits,
 - c) in other programs on acquisition of at least 45 credits.
13. Studies are completed by successfully taking the state bachelor's examination, including defense of the bachelor's dissertation; state final examination in follow-on master's studies, including defense of the diploma thesis; and state doctoral examination, including defense of the scientific work for doctoral programs. The graduate acquires a university diploma supplemented by a complete list of taken subjects given in the Diploma Supplement.
14. For all enrolled studying in study programs in the Czech language studies are free of charge (with the exception of fees for acceptance proceedings – approx. CZK 550). Studies in programs accredited in a foreign language (English, German) are subject to a fee.

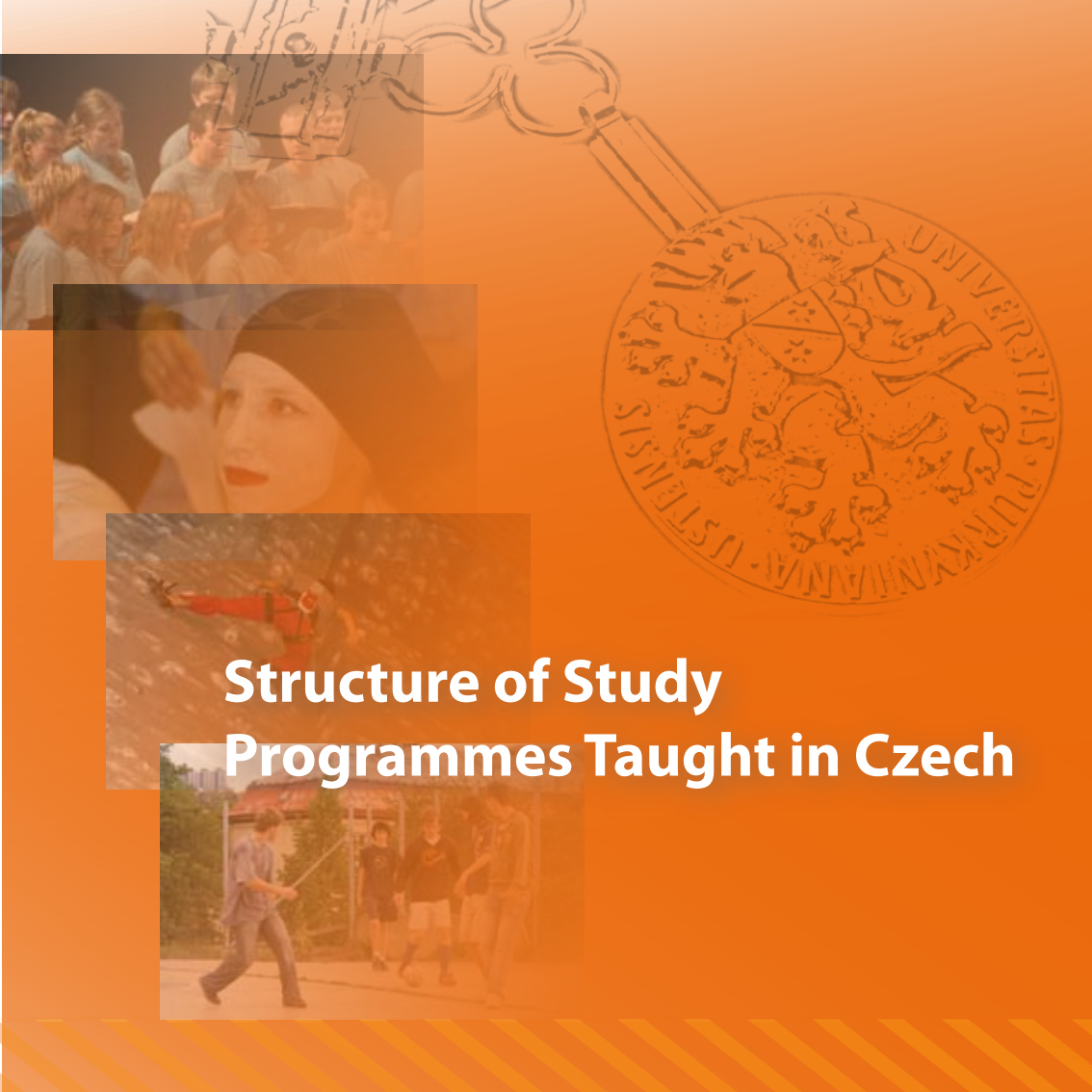


Academic year 2009/2010 starts on 14/09/2009 and ends on 13/09/2010.

	Winter semester			Summer semester		
	regular tuition	examination period	holidays	regular tuition	examination period	holidays
FF, FSE, FVTM, FŽP, PF, PĚF	29. 9.–9. 1. 13 weeks	11. 1.–13. 2. 5 weeks	23. 12.–3. 1.	15. 2.–22. 5. 14 weeks	24. 5.–3. 7. 23. 8.–11. 9. 5 + 3 weeks	4. 7.–22. 8.
FUD	29. 9.–9. 1. 13 weeks	11. 1.–27. 2. 7 weeks	23. 12.–3. 1.	1. 3.–15. 5. 11 weeks	17. 5.–3. 7. 23. 8.–11. 9. 6 + 3 weeks	4. 7.–22. 8.
ŮZS	14. 9.–9. 1. 15 weeks	11. 1.–13. 2. 5 weeks	23. 12.–3. 1.	15. 2.–22. 5. 14 weeks	24. 5.–3. 7. 23. 8.–11. 9. 5 + 3 weeks	4. 7.–22. 8.







Structure of Study Programmes Taught in Czech



Our university is a diverse unity whose advantage is the variety of study programs ranging from human through social-economic and nature up to technical sciences. The unique regional character of the university enables students of nearly all study programs to enjoy the advantages of combining theoretical knowledge and practice (cooperation with regional companies and institutions on implementing new technologies, carrying out economic analyses, performing environmental protection activities, providing social and pedagogic assistance, mapping and conserving cultural heritage, providing health care and rehabilitation services, creating modern design, etc.) This practical aspect also has an international character. The university widely participates in both EU (e.g. LLP/Erasmus, Comenius, Leonardo da Vinci) and national programs of development supported by the Ministry of Education, Youth and Sports and the Ministry of Foreign Affairs. UJEP has a rich cooperation based on 26 whole-university agreements.

The ample dormitory capacity and one of the highest accommodation scholarships in the Czech Republic that the university grants, along with the wide variety of available free-time activity options (11 divisions of the University Slavia sport club, 5 choirs, etc.) make UJEP a modern and attractive place to study.

- Most study programmes are accredited for daily and distance studies
- BSc undergraduates are awarded the title Bc
- MSc graduates are awarded the title Ing/Mgr, MSc
- PhD postgraduates are awarded the title PhD

Notes: 1) Forms of Study: F – full-time, C – combined;

- ® – a field of study in which the faculty has acquired the authorization to perform state Viva examinations and grant the title of PhDr.
- © – a field of study in which the faculty has acquired the authorization to perform state Viva examinations and grant the title of RNDr.



FACULTY OF ART AND DESIGN (FUD)

3 year BSc Study Programmes/Fields

Code	Study program	Code	Study fields	Form of Study ¹
B 8206	Fine Art	8206R100	Design	F
		8204R126	Photography and Inter-media Work	F
		8204R016	Photography	F
		8206R016	Graphic Design	F
		8206R064	Applied Art	F

2 year MSc Study Programmes/Fields

Code	Study program	Code	Study fields	Form of Study ¹
N 8206	Fine Art	8204T016	Photography	F
		8206T119	Curatorship Studies	F
		8206T064	Applied Art	F

3 year PhD Study Programmes/Fields

Code	Study program	Code	Study fields	Form of Study ¹
P 8206	Fine Art	8206V067	Visual Communication	F, C

FACULTY OF EDUCATION (PF)

3 year BSc Study Programmes/Fields

Code	Study program	Code	Study fields	Form of Study ¹
B 7310	Philology	7504R268	English Language and Literature Focused on Education	F
		7310R248	Czech Studies Intended for Slavic Education	F
		7310R040	Czech for Foreigners	F
		7310R117	Business Russian	F
B 7401	Physical Education and Sport	7401R017	Outdoor Activities	F
		7401R005	Physical Education and Sport	F, C
		7401R013	Physical Education and Sport (dual – subject)	F
		7401R014	Physical Education Focused on Education	F
B 7505	Pedagogy	7505R004	Pedagogy of Leisure Time	F, C
B 7507	Specialization in pedagogy	7310R009	English Language and Literature (Single-Subject)	F
		7310R033	Czech language and Literature (single-domain study)	F



Code	Study program	Code	Study fields	Form of Study ¹
		7310R033	Czech Language and Literature (dual-domain study)	F
		7504R269	Czech Language and Literature focused on Education	F
		8201R026	Piano Playing	F
		7504R238	Music Education (one-subject)	F
		7504R238	Music Education (dual subject combination)	F
		7504R233	Music Education Focused on Education	F
		7501R030	Pedagogic-Psychological Qualification	C
		7507R053	Popularization of Music and Organization of Music Life	F
		7504R168	Choir Conducting (dual-subject combination)	F
		7502R011	Social pedagogy	F
		7507R035	Social-Pedagogic Assistance	F, C
		6208R102	School Management	C
		7531R001	Teaching in Pre-schools	F, C
		7507R054	Arts and Crafts (one subject)	F

5 year MSc Study Programmes/Fields

Code	Study program	Code	Study fields	Form of Study ¹
M 7503	Primary School Teacher Education	7503T047	Teaching in Primary Schools	F, C
		7503T015	Teaching Foreign Language for the Primary School — English language	F
		7503T017	Teaching Foreign Language for the Primary School — German Language	F, C
		7503T048	Teaching in Primary Schools and English Language	F
		7503T060	Teaching in Primary Schools and Special Schools	F
		7503T132	Teaching in Primary Schools and Special Pedagogy	F
		7503T007	English Language and Literature for the Second Stage of Primary Schools	F
		7503T011	Biology for the Second Stage of Primary Schools	F



Code	Study program	Code	Study fields	Form of Study ¹
		7503T019	Czech Language and Literature for the Second Stage of Primary Schools	F
		7503T023	History for the Second Stage of Primary Schools	F
		7503T030	Geography for the Second Stage of Primary Schools	F
		7503T034	Musical Appreciation for the Second Stage of Primary Schools ®	F
		7503T036	Chemistry for the Second Stage of Primary Schools	F
		7503T039	Mathematics for the Second Stage of Primary Schools	F
		7503T041	German Language and Literature for the Second Stage of Primary Schools	F
		7503T045	Citizenship Education for the Second Stage of Primary Schools	F
		7503T098	Technical Education for the Second Stage of Primary Schools	F

Code	Study program	Code	Study fields	Form of Study ¹
		7503T100	Physical Education for the Second Stage of Primary Schools	F
		7503T028	Teaching Physics for the Second Stage of Primary Schools	F
		7503T111	Arts and Crafts for the Second Stage of Primary Schools	F
M 7504	Secondary School Teacher Education	7504T028	Biology	F
		7504T039	Czech Language and Literature	F
		7504T042	History	F
		7504T054	Physics	F
		7504T058	Geography	F
		7504T238	Music Education ®	F
		7504T067	Piano solo ®	F
		7504T074	Chemistry	F
		7504T088	Mathematics	F
		7504T092	German Language and Literature	F
		7504T168	Choir Mastery ®	F
		7504T129	Physical Education	F
		7504T158	Computer Science	F
		7504T240	Arts and Crafts	F
		7504T241	Basis of Social Science	F
		7504T122	Solo Singing ®	F



Code	Study program	Code	Study fields	Form of Study ¹
		7504T019	Teaching Czech Language and Literature for the Second Stage of Primary Schools and the Secondary School	F
		7504T020	Teaching Musical Appreciation for Primary Schools, Secondary Schools and Art Schools ®	F
		7504T022	Teaching Arts and Crafts for Primary Schools, Secondary Schools and Art Schools	F
M 7505	Education	7505T014	Educator for Special Educational Facilities	F, C

2 year MSc Study Programmes/Fields

Code	Study program	Code	Study fields	Form of Study ¹
N 7401	Physical Education and Sport	7504T129	Physical Education for Secondary School	F
N 7503	Primary School Teacher Education	7503T147	English Language and Literature for the Second Stage of Primary Schools	F

Code	Study program	Code	Study fields	Form of Study ¹
		7503T143	Czech Language and Literature for the Second Stage of Primary Schools ®	F
		7503T144	Musical Appreciation for the Second Stage of Primary Schools	F
		7503T145	Physical Education for the Second Stage of Primary Schools	F
		7503T146	Arts and Crafts for the Second Stage of Primary Schools ®	F
		7503T014	Teaching Foreign Language for the Primary School — English Language	F
N 7504	Secondary School Teacher Education	7504T292	Choir Conducting in Secondary School ®	F
		7504T296	Art with a View to Education ®	F
		7504T038	Czech Language and Literature Teacher Education for 2nd level of Primary School and Secondary School (single-domain study) ®	F



Code	Study program	Code	Study fields	Form of Study ¹
		7504T039	Czech Language and Literature in Secondary School ®	F
		7504T072	Music Education in Secondary School ®	F
		7504T297	Teaching Musical Appreciation for Primary Schools, Secondary Schools and Art Schools ®	F
		7504T162	Art in Secondary School ®	F
N 7505	Education	7505T021	Teaching for Special Pedagogic Institutions	F

3 year PhD Study Programmes/Fields

Code	Study program	Code	Study fields	Form of Study ¹
P 7507	Specialization in Pedagogy	7501V005	Music Theory and Pedagogy	F, C
		7501V014	Theory of Arts & Crafts	F, C
		7501V029	Czech Studies Theory of Education	F, C
Fields for habilitation proceedings and proceedings for appointment of a professor: Music Theory and Pedagogy Arts & Crafts – theory and production				

FACULTY OF THE ENVIRONMENT (FŽP)

3 year BSc Study Programmes/Fields

Code	Study program	Code	Study fields	Form of Study ¹
B 1601	Ecology and Environmental Protection	1604R007	Environmental Protection	F, C
B 3904	Engineering Ecology	3904R012	Environmental Protection in Industry	F, C
		3904R023	Water Management	F, C

2 year MSc Study Programmes/Fields

Code	Study program	Code	Study fields	Form of Study ¹
N 1601	Ecology and Environmental Protection	1604T004	Waste Management	F
		3914T009	Revitalization of Landscape	F



FACULTY OF PHILOSOPHY (FF)

3 year BSc Study Programmes/Fields

Code	Study program	Code	Study fields	Form of Study ¹
B 6101	Philosophy	6101R004	Philosophy(Two-Subject Combination)	F
B 6107	Human Studies	6107R020	Social Sciences (Two-Subject Combination)	F
		7507R030	Social Sciences with an Emphasis on Education (Two-Subject Combination)	F
		6107R015	Human Studies Focused on Aesthetics	F
		6107R016	Human Studies Focused on Political Science	F
		6701R008	Political Science (Two-Subject Combination)	F
B 7105	Historical Sciences	7105R060	Documentation of Historical Memorials	F
		7105R021	History (Two-Subject Combination)	F
		7105R021	History (Single Subject)	F
		7105R056	History with Education Emphasis (Two Subject Combination)	F
		7105R056	History with Education Emphasis	F

Code	Study program	Code	Study fields	Form of Study ¹
		7105R034	Cultural and Historical Regional Studies	F
B 7310	Philology	7310R242	Intercultural German Studies	F
		7310R106	German Language and Literature (Single Subject)	F
		7310R106	German Language and Literature (Double-Subject Combination)	F
		7310R249	German Language and Literature with Focus on Education	F
		7507R080	German Language for School Professions	C

2 year MSc Study Programmes/Fields

Code	Study program	Code	Study fields	Form of Study ¹
N 6107	Human Studies	6107T020	Social Sciences (Two-Subject Combination)	F
		6107T021	Teaching Social Sciences for Middle School (Two-Subject Combination)	F
N 6701	Political Studies	6701T023	Political philosophy	F
N 7105	Historical Sciences	7105T 048	History (Single Subject) ®	F



Code	Study program	Code	Study fields	Form of Study ¹
		7105T021	History (Two-Subject Combination) ®	F
		7105T034	Cultural and Historical Regional Studies	F
		7105T066	German Studies in the Central European Context	F
		7504T063	Teaching History for Middle School (Single Subject)	F
		7504T063	Teaching History for Middle School (Two-Subject Combination)	F
N 7310	Philology	7504T092	Teaching Social Sciences for Middle School (Two-Subject Combination)	F

Code	Study program	Code	Study fields	Form of Study ¹
N 7503	Secondary School Teacher Education	7503T140	History (Two-Subject Combination)	F
		7503T148	German Language and Literature for Second Level Basic Schools	F
		7503T142	Civics and Social Science for Second Level Basic Schools (Single Subject)	F
		7503T018	Teaching Foreign Languages for Basic Schools — German Language (Single Subject)	F, C

3 year PhD Study Programmes/Fields

Code	Study program	Code	Study fields	Form of Study ¹
P 7105	Historical Sciences	7105V012	Czech history	F, C



FACULTY OF PRODUCTION TECHNOLOGY AND MANAGEMENT (FVTM)

3 year BSc Study Programmes/Fields

Code	Study program	Code	Study fields	Form of Study ¹
B 2303	Engineering Technology	2303R008	Production Management	F, C
		2303R012	Production Technology of Glass and Polymers	F
		2303R013	Glass and Polymer Management	F
B 2341	Engineering	2341R003	Production Security	F
B 7507	Engineering Technology	7507R051	Technical Training Focused on Education	F

2 year MSc Study Programmes/Fields

Code	Study program	Code	Study fields	Form of Study ¹
N 2303	Engineering Technology	2303T011	Production Preparation and Management	F

3 year PhD Study Programmes/Fields

Code	Study program	Code	Study fields	Form of Study ¹
P 2303	Engineering Technology			F, C

FACULTY OF SCIENCE (PřF)

3 year BSc Study Programmes/Fields

Code	Study program	Code	Study fields	Form of Study ¹
B 1001	Natural Science Studies	1701R048	Natural Science Education	F
B 1101	Mathematics	1801R006	Mathematical Informatics	F
		1101R016	Mathematics (double subject)	F, C
		7504R015	Mathematics Focused on Education (double subject)	F
		1101R...	Mathematics and their Use in Natural Sciences	F
B 1301	Geography	1301R005	Geography	F
		1301R005	Geography (double subject)	F
		1301R019	Central-European Geography	F
B 1407	Chemistry	1407R005	Chemistry (double subject)	F
		1407R014	Chemistry Focused on Education	F
		1407R016	Toxicology and Hazardous Waste Analysis	F
B 1501	Biology	1501R001	Biology	F, C
		1501R001	Biology (dual-subject study)	F



Code	Study program	Code	Study fields	Form of Study ¹
B 1701	Physics	1701R003	Physics (dual-subject study)	F, C
		1702R020	Physics Focused on Education	F
		1802R014	Computer Modelling in Physics and Technology	F, C
		1701R046	Computer Modelling in Physics, Technology and Production (with the Secondary Industrial and Higher Vocational School in Chomutov)	F
B 1801	Informatics	1801R001	Information Sciences (double subject)	F
B 1802	Applied Informatics	1802R006	Information Systems	F
B 2808	Chemistry and Technology of Materials	2808R020	Building material chemistry	F

2 year MSc Study Programmes/Fields

Code	Study program	Code	Study fields	Form of Study ¹
N 1101	Mathematics	7503T039	Teaching Mathematics for the 2nd Level of Primary Schools (double subject) ©	F

Code	Study program	Code	Study fields	Form of Study ¹
		7504T089	Teaching Mathematics for Secondary Schools ©	F
N 1301	Geography	1301T005	Geography	F
		7503T030	Teaching Geography for the 2nd Level of Primary Schools (double subject)	F
		7504T059	Teaching Geography for Secondary Schools	F
N 1407	Chemistry	7503T036	Teaching Chemistry for the 2nd Level of Primary Schools (dual-subject study)	F
N 1501	Biology	7503T011	Teaching Biology for the 2nd Stage of Primary Schools (dual-subject study)	F
		7504T029	Teaching Biology for Secondary Schools	F
N 1701	Physics	1802T017	Computer Modelling in Science and Technology ©	F
		7503T028	Teaching Physics for the 2nd Level of Primary Schools (dual-subject study) ©	F
		7504T055	Teaching Physics for Secondary Schools ©	F



3 year PhD Study Programmes/Fields

Code	Study program	Code	Study fields	Form of Study ¹
P 1101	Mathematics	1101V025	General Mathematical Issues (together with the Faculty of Applied Sciences at the West Bohemian University in Pilsen)	F, C
P 1701	Physics	1802V020	Computer Methods in Science and Technology	F, C

FACULTY OF SOCIAL AND ECONOMIC STUDIES (FSE)

3 year BSc Study Programmes/Fields

Code	Study program	Code	Study fields	Form of Study ¹
B 6202	Economic Policy and Administration	6202R040	Regional Development	F, C
B 6208	Economics and Management	6208R113	Financial Management	F, C
		6208R142	Trade and Marketing	F, C
		6208R086	Business Administration and Management	F, C
B 6731	Social Policy and Social Work	6731R012	Social Work	F, C

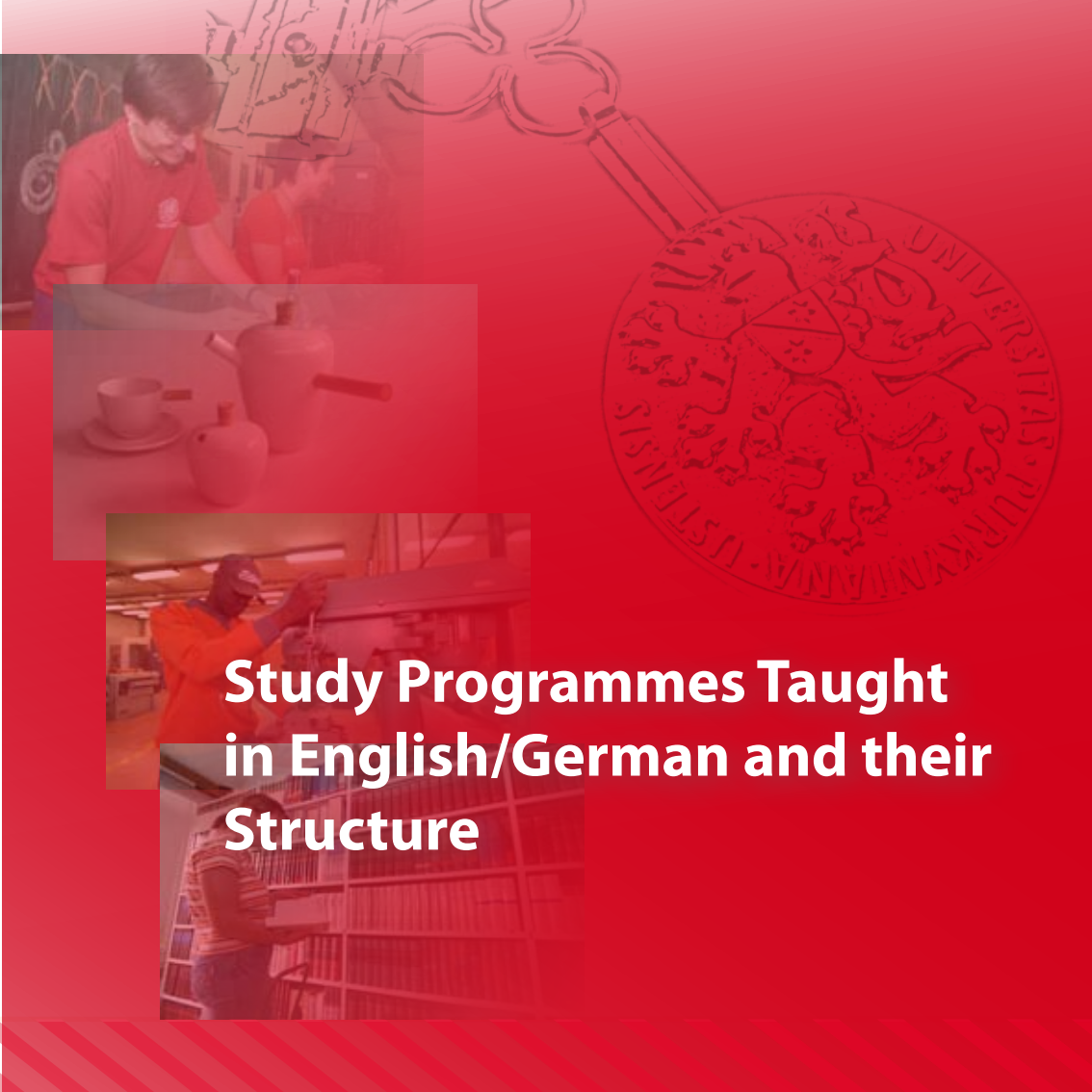
2 year MSc Study Programmes/Fields

Code	Study program	Code	Study fields	Form of Study ¹
N 6202	Economic Policy and Administration	6202T040	Regional Development	F
N 6208	Economics and Management	6208T086	Business Administration and Management	F
		6208T113	Financial Management	F

INSTITUTE OF HEALTH STUDIES (ÚZS)

3 year BSc Study Programmes/Fields

Code	Study program	Code	Study fields	Form of Study ¹
B 5341	Nursing	5341R007	Midwifery	F
		5341R009	General Nursing	F
B5345	Health Service Specialization	5342R002	Ergotherapy	F
		5342R004	Physiotherapy	F



**Study Programmes Taught
in English/German and their
Structure**



FACULTY OF ART AND DESIGN (FUD)

2 year MSc Study Programmes/Fields

Code	Study program	Code	Study fields	Form of Study ¹
N 8206	Fine Art	8204T016	Photography	F

Master in PHOTOGRAPHY

The student of this important master's degree course of Photography will undergo systematic, specialized training prepar-

ing him for the career of independent photographer, and will also experience the stimulating atmosphere of a student community drawn from different cultural and language environments. The high level of study is assured by the previous international experience of most of the team members, who are knowledgeable lecturers (holding positions as visiting lecturers, with repeated foreign lecture activity, organization of workshops, attendance at creative sessions, and important exhibition activities) and also by their





professional teaching of students within the developed and accredited, follow-on master's course in photography in the Czech language.

The graduate of the course will be professionally equipped with systematic, structured knowledge and skills leading to a career as an independent artist, a creative executive of advertising and marketing agencies, in graphical studies, or as a publisher. He may also become a trustee of museums or galleries with photographic collection funds and exhibition activities. The student of this sphere will at the same time acquire the foundations of polemic-critical thinking, and will develop skills of perception, analysis and reflection of photography as an autonomous artistic discipline. The study concept will at the same time impart to him a basic orientation in the Czech cultural world, in the extended Central European visual culture framework and to acquire knowledge of the standing of photographic media within this context. A feature of the English variant of the photographic study is its major inter-disciplinarity and permeabil-

ity, built on the coordinated cooperation of current studios (Photography, Applied and advertising photography and Interactive media).

Programme director: prof. Mgr. Miroslav Vojtěchovský

Contact: Mgr. Zdena Kolečková, Ph.D.
 Phone: +420 475 285 153
 Fax (dean's office): +420 475 285 127
 E-mail: zdena.koleckova@ujep.cz
 More information: <http://www.fud.ujep.cz/en>

1st year – Winter semester

Subject	Course code	ECTC credits
Photography History I	KDT/738	2
Hist.of Modern and Cont.Centr.Eur.Arts I	KDT/740	2
Workshops	KFO/819	6
Principles of Studio Photography I	KFO/809	1
Photography and Contemporary Art I	KDT/735	2
New Media I	KFO/813	2
Studio and Workshops I	KFO/816	3
Special Photo Technologies I	KFO/811	2
Studio and Workshops I-semesteral project	KFO/815	11
Introduction to Czech Culture I (cec)	KDT/744	2
Polemical-Critical Seminar I (cec)	KDT/742	2
Graphics I	KVP/752	1
Painting I	KVP/750	1
Drawing I	KVP/748	1
Czech Language I	KVP/754	1



1st year – Summer semester

Subject	Course code	ECTC credits
Photography History II	KDT/739	4
Principles of Studio Photography II	KFO/810	1
Special Photo Technologies II	KFO/812	2
New Media II	KFO/814	2
Hist. of Modern and Cont. Centr. Eur. Arts II	KDT/741	4
Studio and Workshops II	KFO/817	3
Studio and Workshops II-semesteral project	KFO/818	11
Photography and Contemporary Art II	KDT/736	2
Polemical-Critical Seminar II (cec)	KDT/743	2
Introduction to Czech Culture II (cec)	KDT/745	2
Drawing II	KVP/749	1
Graphics II	KVP/753	1
Painting II	KVP/751	1
Czech Language I	KVP/755	1

2nd year – Winter semester

Subject	Course code	ECTC credits
Diploma Work Tutorials I	KFO/821	20
Concept in Photography I	KFO/820	10
Photography and Contemporary Art III	KDT/737	10

2nd year – Summer semester

Subject	Course code	ECTC credits
Practical Part of Diploma Work	KFO/823	0
Defence of Diploma Thesis	KFO/824	0
Diploma Work Tutorials II	KFO/822	20

FACULTY OF EDUCATION (PF)

3 year BSc Study Programmes/Fields

Code	Study program	Code	Study fields	Form of Study ¹
B 7507	Specialization in Education	8201R026	Piano Playing	F

The course objective is to provide the student an education experience, which enables him to handle the position of solo pianist, member of various chamber music groups, where he performs as an artistic equivalent as well as an accompanying partner. The student is also educated to become a piano teacher in basic and middle music schools.

The major course – solo piano playing – takes the form of seminars, which practice the complex of skills needed for technical, artistic and stylishly correct interpretation of piano performing. The repertoire is different each semester and is compiled to include all style periods and artistic types of pieces. Each semester a programme must be performed on stage (course Solo public performance).



Programme director: doc. MgA. Petr Slavik

Contact: doc. MgA. Petr Slavik
 Phone: +420 475 283 328
 Fax (dean's office): +420 475 212 053
 E-mail: petr.slavik@ujep.cz
 More information: http://pf.ujep.cz/files/KHV_piano_eng.pdf

1st year – Winter semester

Subject	Course code	ECTC credits
Piano Playing I	KHV/6236	13
Music History Focused on Piano Themes I	KHV/6238	3
Musical Informatics I	KHV/6240	3
History of World Music I	KHV/6242	5
Musical Aesthetics I	KHV/6244	2

1st year – Summer semester

Subject	Course code	ECTC credits
Piano Playing II	KHV/6246	16
Methodology of Piano Playing I	KHV/6248	3
Music History Focused on Piano Themes II	KHV/6250	3
Musical Informatics II	KHV/6252	3
Foreign Language I	CJP/0287-0292	2
Foreign Language II	CJP/0294-0299	2
History of World Music II	KHV/6254	3
Musical Aesthetics II	KHV/6256	2

2nd year – Winter semester

Subject	Course code	ECTC credits
Piano Playing III	KHV/6258	13
Piano Music Auditory Seminar I	KHV/6260	2
Methodology of Piano Playing II	KHV/6262	6
Czech Music History I	KHV/6264	4
Didactics of Musical Education I	KHV/6266	2
Compulsory Optional Course A		2

2nd year – Summer semesterr

Subject	Course code	ECTC credits
Piano Playing IV	KHV/6268	16
Piano Music Auditory Seminar II	KHV/6270	2
Seminar of Methodology	KHV/6272	3
Solo Piano Performance	KHV/6274	0
Czech Music History II	KHV/6276	3
Analysis of Musical Compositions I	KHV/6278	3
Didactics of Musical Education II	KHV/6280	2
Compulsory Optional Course B		2

3rd year – Winter semester

Subject	Course code	ECTC credits
Piano playing V	KHV/6282	15
Piano interpretation seminar I	KHV/6284	3
Methodical practices I	KHV/6286	3
Seminar for the bachelor's thesis	KHV/6288	3
Analysis of musical compositions II	KHV/6290	3
Compulsory optional course V		2



3rd year – Summer semester

Subject	Course code	ECTC credits
Piano Playing VI	KHV/6292	18
Piano Interpretation seminar II	KHV/6294	3
Methodical Practices II	KHV/6296	4
Analysis of Musical Compositions III	KHV/6298	4
Compulsory Optional Course D		2

Compulsory optional course

Primavista piano playing A-D:
KHV/6302, KHV/6312, KHV/6322,
KHV/6332

Chamber music A-D: KHV/6304,
KHV/6314, KHV/6324, KHV/6334

Improvisation and harmonization A-D:
KHV/6306, KHV/6316, KHV/6326,
KHV/6336

Music in our region A-D: KHV/6308,
KHV/6318, KHV/6328, KHV/6338

Piano accompaniment A-D: KHV/6310,
KHV/6320, KHV/6330, KHV/6340

**FACULTY OF PHILOSOPHY
(FF)**

3 year PhD Study Programmes/Fields

Code	Study program	Code	Study fields	Form of Study!
P 7105	Historische Wissenschaft	7105V012	Tschechische Geschichte	F, C

A graduate of the doctoral study program in the field of Czech history (of a greater part of the 20th century in Czech history) will acquire good and reliable orientation in the field and excellent orientation within his specialization. Overall the student will acquire the ability to creatively manage the methodology and theory of historical science (including varied comparative aspects), will acquire an overview of the development of historiography and will be prepared for independent scientific work in the field of history. A graduate in this field should be capable of executing and directing independent historical research, presenting results in the form of scientific publications and appearances at scientific conferences in CZ and abroad. Graduates will be able to



find employment in all institutions, which professionally work on historical subjects in the fields of Czech and Czechoslovak history, or in specific areas, in the field of Czech-German relations, in scientific institutions, archives, museums, the appropriate administrative institutes, etc. Preparation for pedagogical activities also enables graduates of the doctoral study program to work as a university professor, either as an employee of a university or as an independent co-worker, with primary employment at a scientific workplace.

Programme director: doc. PhDr. Kristina Kaiserová, CSc.

Contact: doc. PhDr. Kristina Kaiserová, CSc.
 Phone: +420 475 282 623
 Fax (dean's office): +420 475 283 274
 E-mail: kristina.kaiserova@ujep.cz
 More information: http://ff.ujep.cz/index.php?option=com_content&view=article&id=1479&Itemid=535

1st year – Winter semester

Subject	Course code	ECTC credits

1st year – Summer semester

Subject	Course code	ECTC credits
Philosophy	KHI/0700	2
Foreign Language	KHI/0701	2

2nd year – Winter semester

Subject	Course code	ECTC credits
Methodology and Historiography	KHI/0702	

2nd year – Summer semester

Subject	Course code	ECTC credits
Foreign Language B	KHI/0703	2

3rd year – Winter semester

Subject	Course code	ECTC credits
Czech History	KHI/0704	2

3rd year – Summer semester

Subject	Course code	ECTC credits
State Doctoral Examination	KHI/SDZ	2



FACULTY OF SCIENCE (PřF)

3 year PhD Study Programmes/Fields

Code	Study program	Code	Study fields	Form of Study ¹
P 1701	Physics	1802V020	Computer Methods in Science and Technology	F, C

Each graduate shall significantly expand their knowledge in some mathematical discipline. They further have the option of becoming involved either in the problem of school mathematics or to further work in the area of mathematics itself.

In the first case, graduates will be involved in school mathematics in a wider scope in such a way that they are able, in the respective area, to work in a creative manner in a department of mathematics at a university during the preparation of future teachers, or to teach mathematics in a creative manner at secondary schools. The graduate shall orient himself in the area of pedagogy and pedagogic psychology, in the doctrines of mathematics, school education policies, philosophical aspects of natural sciences and education. Graduates will be able to resolve expert problems in theory and practice of educa-





tion in mathematics, introduce new educational procedures and evaluate them critically, create models of mathematical education or share in the development of theory of teaching mathematics as a scientific discipline.

In the second case, the graduate's knowledge in mathematics or related disciplines shall be at such a level that the graduate can work in a creative manner in the selected field in a mathematics department at a university, academic or research institution.

Each graduate will personalize their ability to plan independent creative activities, process projects, form the goals of such projects and find theoretical and experimental methods for their solutions, and will be able to work in international teams.

Programme director: doc. RNDr. Dušan Novotný, CSc.

Contact: doc. RNDr. Dušan Novotný, CSc.
 Phone: +420 475 283 317
 Fax: +420 475 283 563
 E-mail: dusan.novotny@ujep.cz
 More information: <http://physics.ujep.cz/EN/index.php>

1st year – Winter semester

Subject	Course code	ECTC credits
Advanced Numerical Mathematics	KFY/PD01	-
Advanced Mathematics I	KFY/PD05	-
Computational Physics Seminars I	KFY/PD06	-

1st year – Summer semester

Subject	Course code	ECTC credits
Advanced Mathematics II	KFY/PD10	-
Computational Physics Seminars II	KFY/PD07	-
Specialization		-

2nd year – Winter semester

Subject	Course code	ECTC credits
Modern methods of computational physics	KFY/PD08	-
Specialization		-

2nd year – Summer semester

Subject	Course code	ECTC credits
English for doctoral studies	KFY/PD11	-
Specialization		-

3rd year – Winter semester

Subject	Course code	ECTC credits
Specialization		-

3rd year – Summer semester

Subject	Course code	ECTC credits
Specialization		-





Czech Language Course for Foreigners

CONTACT

Life Long Learning Centre (CCV PF)

Faculty of Education

Jan Evangelista Purkyně University in Ústí nad Labem

Street Hoření 13, 400 96 Ústí nad Labem, Czech Republic

Mgr. Věra Michalová, +420 475 282 360, vera.michalova@ujep.cz

Participants attending these courses are **not UJEP students** and the related advantages do not apply to them (unless they simultaneously attend a study programme).

The centre offers foreigners language courses for acquiring language skills for further studies in the Czech language. These Czech language courses are offered in the following structure:

A) ONE YEAR CZECH LANGUAGE COURSE

Term: September 2010 – April 2011 (30 weeks)

Exams: April 2011

Full cost: CZK 75,000

The full cost of the course includes tuition fees, 900 lessons of studies and basic teaching materials. The course is concluded with an official exam and the issue of the Certificate of Achievement (level B2). The minimum number of participants is 10 per course.



B) ONE HALF YEAR CZECH LANGUAGE COURSE

Term: January – June 2010 (20 weeks)

Exams: June 2010

Full cost: CZK 45,500

The full cost of the course includes tuition fees, 400 lessons of studies and basic teaching materials. The course is concluded with an official exam and the issue of the Certificate of Achievement (level B2). The minimum number of participants is 10 per course.

C) SUMMER LANGUAGE COURSE "CZECH LANGUAGE FOR FOREIGNERS OF SLAVONIC ORIGIN (FROM SLAVONIC COUNTRIES)"

Term: July – September 2010 (10 weeks)

Exams: September 2010

Full cost: CZK 36,500

The full cost of the course includes tuition fees, 360 lessons of studies and basic teaching materials. The course is concluded with an official exam and the issue of the Certificate of Achievement (level A2). The minimum number of participants is 10 per course.





Here we would like to advise you of the fact that we cannot accept your application, nor can we send you the admission letter necessary for your visa application, without confirmed payment of the tuition fee.

1. Price information

The price of the course provided on our web page does not include any banking fees, and/or transfer charges. Any such charges should be covered additionally.

IBAN account format:

CZ6807100100060001133411

SWIFT (BIC) CODE: CNBACZPP

Remittance information: 3503 41 3001

Recipient: Jan Evangelista Purkyně
University in Ústí nad Labem,
Hořeni 13, 400 96 Ústí n. L.

Bank: Česká narodní banka, pobočka Ústí
nad Labem, Klášterní 11, 401 22
Ústí n. L.

On registration day, each language course participant should provide a document confirming payment, a valid passport and two (2) photographs. Course cancellations are fully reimbursed with exception of € 100 handling charge.

The applicant must send a copy of a leaving certificate (or a document of a similar value proving his/her graduation from high school) authenticated by a notary public. It is necessary to enclose an English or Russian translation of these documents. The documents must be sent to the Lifelong Learning Centre, Faculty of Education, Hořeni 13, 400 96 Ústí nad Labem, Czech Republic as soon as possible.

After the payment has been made and the leaving certificate authenticated by a public notary submitted, the applicant will receive a confirmation of his/her acceptance to the course "Czech for Foreigners". The acceptance letter will be sent. This confirmation is needed when applying for a student visa.



The tuition fee **DOES NOT** include additional cost of living (boarding, accommodation, public transportation etc.), an amount of ca. CZK 7,000 (€ 300) per month.

2. Visa information

A valid travel document (a passport) is needed to enter Czech Republic, accompanied by a visa, if required. For the details of student applications please contact the Czech Embassy in your state. We would like to stress the importance of arranging "Visa for the stay over 90 days" to all our potential students at the Czech Embassy in their home country. Such a Visa cannot be arranged on the territory of the Czech Republic!

The application for the student visa must be accompanied by the following:

- valid passport
- document verifying the purpose of stay in the Czech Republic
- document proving secured accommodation in the Czech Republic for the period of study

- extract from police records provided by home country, or the country the applicant has lived in for the last three (3) years
- proof of sufficient financial means for the duration of stay in the Czech Republic
- two (2) passport size photographs

The university will provide you the following documents, necessary for student visa application:

- document verifying the purpose of stay in the Czech Republic
- document proving secured accommodation in the Czech Republic for the period of study (only in case you would like to get accommodation in the University student's dormitory).

Important note: For further details, please contact your nearest Czech Embassy.

3. Accommodation and Boarding

You can get accommodation in the university dormitory. We offer:

Single, double, and triple rooms with combined facilities in the University dormitory (CZK 2,600–3,090) per language course participant per month.

At the University dormitory meals can be cooked in kitchenettes in each room.

Lunches are offered at the University canteen on workdays or in two public canteens in the city centre (CZK 54/ lunch). Of course catering is offered by many quality restaurants in the city.

4. Insurance

Medical care in the Czech Republic is of a very high standard and is offered through a wide network of medical facilities. Foreign nationals can get their medical insurance at any local branch of the General Health Insurance Company, for





about CZK 1,050 per month. Such medical insurance package covers most treatments of diseases and injuries due to accidents or complex insurance for about CZK 1,900 per month.

If not covered by the insurance package, the student risks the possibility of paying full charge for medical services, when needed. Language course participants can obtain their medical insurance coverage already in their respective countries while applying for the student visa.

5. Additional information

After completion of the language and preparatory studies, foreign applicants take the university entry exams together with domestic Czech applicants. It may be useful to have an advance estimate as to which fields they stand better chances of being admitted into. After Czech language course participants are encouraged to send out application(s) to selected university/faculty(ties) they wish to study at. The number of selected faculties is not restricted, however, once an application is forwarded to a faculty, the student is

obliged to do the entrance exam there. All of the university entry exams are usually organized in the month of June.

For the entry exam, together with the application students must also provide an official proof of completed secondary education, with a Curriculum/Study Plan of subjects studied for last four (4) years, and the Birth Certificate. All of these documents must be legally attested and translated into Czech language. (The Czech translations can be arranged for during the one-year preparatory course.)

6. Study related documents

All foreign students wishing to embark on higher studies in the Czech Republic must obtain validation of their secondary education by the Czech Education Office.

Documents required for this validation procedure:

- a) Official proof of secondary/high school completion (High School Graduation Certificate, etc.)

- b) The Curriculum/Study Plan of subjects studied at secondary level each year with the number of lessons in each subject and, if possible, a certificate about the volume of practical lessons. If such documents do not exist, a written explanatory statement will be provided by the Czech diplomatic mission and enclosed with the applicant's dossier.

All of these documents must be legally attested and translated into Czech language.

All documents must be also verified by the Czech Foreign Ministry - or - the Official Notary Office in the country of origin and subsequently by the Czech Embassy there. Documents without official stamps are not recognized!





Contacts



Faculty of Art and Design (FUD) ³

Pasteurova 9, 400 96 Ústí nad Labem

vice-dean for external relations:

Name: PhDr. Jaroslav Polanecký Ph.D.

Phone: +420 475 285 116

e-mail: jaroslav.polanecky@ujep.cz

vice-dean for study:

Name: Mgr. Michaela Thelenová

Phone: +420 475 285 124

e-mail: michaela.thelenova@ujep.cz

Faculty of Education (PF) ⁵

České mládeže 8, 400 96 Ústí nad Labem

vice-dean for external relations:

Name: doc. PhDr. Mgr. Jiří Škoda Ph.D.

Phone: +420 475 283 122

e-mail: jiri.skoda@ujep.cz

vice-dean for study:

Name: doc. PaedDr. Pavel Doulík, Ph.D.

Phone: +420 475 283 121

e-mail: pavel.doulik@ujep.cz

Faculty of the Environment (FŽP) ⁴

Králova výšina 3132/7, 400 96 Ústí nad Labem

vice-dean for external relations:

Name: Ing. Martin Neruda Ph.D.

Phone: +420 475 284 139

e-mail: martin.neruda@ujep.cz

vice-dean for study:

Name: Ing. Petr Bogan

Phone: +420 475 284 128

e-mail: petr.bogan@ujep.cz

Faculty of Philosophy (FF) ⁵

České mládeže 8, 400 96 Ústí nad Labem

vice-dean for external relations:

Name: doc. Ing. Aleš Havlíček, Ph.D.

Phone: +420 475 283 289

e-mail: ales.havlicek@ujep.cz

vice-dean for study:

Name: Mgr. Jiří Koumar

Phone: +420 475 283 290

e-mail: jiri.koumar@ujep.cz



Faculty of Production Technology and Management (FVTM) ⁶

Na Okraji 1001, 400 01 Ústí nad Labem

vice-dean for external relations:

Name: Ing. Tomáš Vysloužil Ph.D.

Phone: +420 475 285 518

e-mail: tomas.vyslouzil@ujep.cz

vice-dean for study:

Name: PhDr. Jaroslav Zukerstein Ph.D.

Phone: +420 475 285 523

e-mail: jaroslav.zukerstein@ujep.cz

Faculty of Science (PřF) ⁵

České mládeže 8, 400 96 Ústí nad Labem

vice-dean for external relations:

Name: doc. RNDr. Jaroslav Pavlík CSc.

Phone: +420 475 283 188

e-mail: pavlikj@sci.ujep.cz

vice-dean for study:

Name: RNDr. Eva Hejnová, Ph.D.

Phone: +420 475 283 186

e-mail: eva.hejnova@ujep.cz

Faculty of Social and Economic Studies (FSE) ²

Moskevská 54, 400 96 Ústí nad Labem

vice-dean for external relations:

Name: Ing. Jiří Uhman

Phone: +420 475 284 719

e-mail: jiri.uhman@ujep.cz

vice-dean for study:

Name: Mgr. Jaroslav Holas

Phone: +420 475 284 917

e-mail: jaroslav.holas@ujep.cz

Institute of Health Studies (ÚZS) ⁷

Velká Hradební 13, 400 96 Ústí nad Labem

deputy director for external relations:

Name: prof. PhDr. Ing. Lenka Hajerová-Müllerová, Ph.D.

Phone: +420 475 284 849, +420 477114897

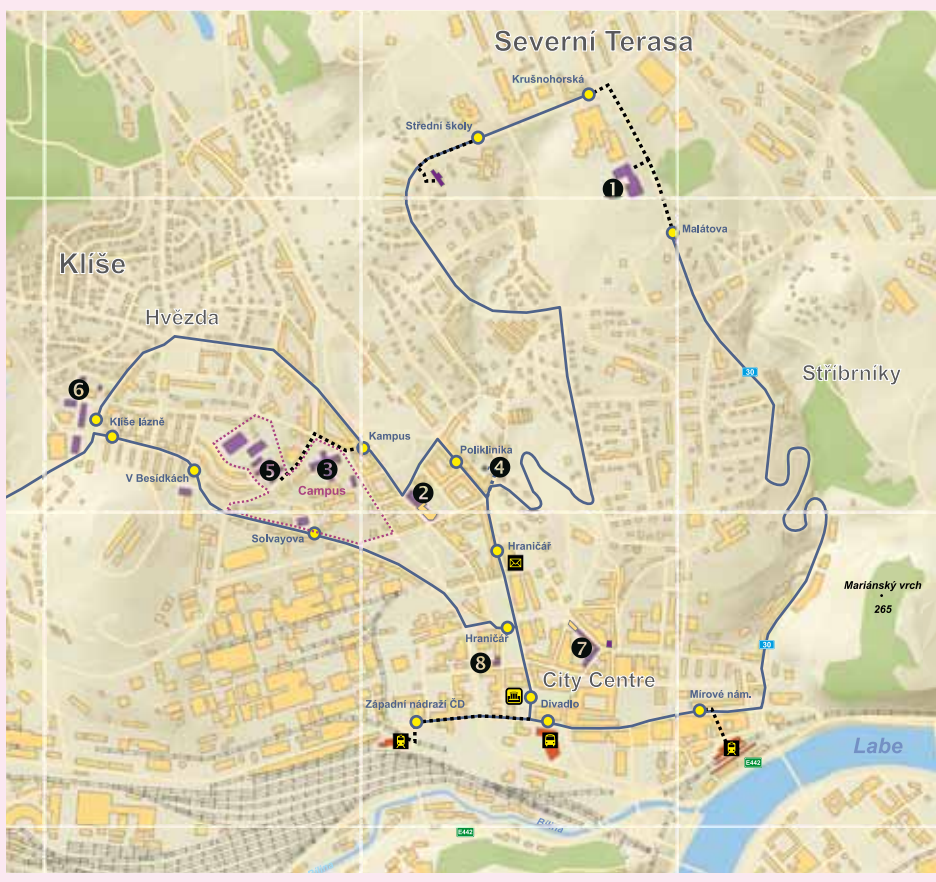
e-mail: lenka.hajerova-mullerova@ujep.cz

deputy director for study:

Name: Mgr. Dana Šlechtová

Phone: +420 475 284 212

e-mail: dana.slechtova@ujep.cz





**Ústí nad Labem City and the
Ústí Region
Czech Republic/Basic
Information**



The university town of Ústí nad Labem is an industrial metropolis in North-west Bohemia with nearly one hundred thousand inhabitants. It has assumed its strategic position on the Elbe River – the river route to Hamburg – since the 11th century. In the other direction – upstream – it represents a symbolic entrance gate to Bohemia – Porta Bohemica. The history of the town is fairly troubled as it is linked to a number of military conflicts, which regularly interrupted its periods of development. One of the bloodiest of these conflicts was when the armies of Napoleon were beaten by the allied armies of Russia, Prussia and Austria in 1813. The town suffered its last wartime hardship in April 1945 in the form of an air-raid by the American 8th air squadron. The second most tilted tower in Europe – the tower of the Church of the Ascension of the Virgin Mary, which deviated from its axis by nearly two metres – remains a reminder of this event.

The industrial history of the town was initially linked to silver and tin mining and processing, later on to development

of the textile industry and subsequently to brown coal mining and development of the chemical industry, establishment of sugar refineries, breweries and alcohol distilleries, to introduction of steam navigation and construction of the Masaryk locks and electricity generation plant directly below Střekov castle.

Today, the regional town of Ústí nad Labem offers varied cultural and social opportunities (for instance the Municipal Theatre of Opera and Ballet, the theatre studio, the House of Culture, the National Hall, the museum of the town of Ústí nad Labem, two natural cinemas, a number of galleries, the North Bohemian Science Library, The municipal spa, the zoological gardens, the Větruše look out tower and restaurant). The advantage of this regional town with regard to sports activities and activities in nature, is its location in the Elbe valley between the Czech Central Mountains and the Ore Mountains. Its proximity to the Czech Switzerland national park and the Elbe sandstone protected nature reserve make

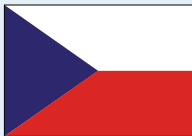
the town and the whole Ústí region attractive to tourists.

The hilly terrain of the region with abundant bodies of water, provides ideal conditions for cycling, hiking (or possibly a combination of both), mountaineering, paragliding, for water sports and for skiing in winter. There are also tennis courts, bowling halls, stadiums and sports halls in the town, as well as riding schools and golf courses in the surrounding area. (See

www.usti-nad-labem.cz for more information.)

There are a number of nature sites near the town of Ústí nad Labem, which are European rarities. These include for instance the Vrkoč natural monument (a column like formation of basalt), the 12 metre high Vaňov waterfall (4 km from the centre of town), Koží vrch (a craggy massif with abundant thermophilic vegetation).





The official currency in the Czech Republic is the Czech Crown (CZK). Exchange rates (May, 2009):

1 EUR = 26.75 CZK

1 USD = 19.50 CZK

The Czech Republic is divided into 14 regions with municipalities: Brno, České Budějovice, Hradec Králové, Jihlava, Karlovy Vary, Liberec, Olomouc, Ostrava, Pardubice, Plzeň, Praha, Ústí nad Labem and Zlín. It has a transitional climate between maritime and continental characterized by hot, showery summers, cold, snowy winters and generally changeable conditions. On a typical day in the Czech Republic between June and August the maximum temperature is between 15°C and 25°C. Temperatures from December

to February drop below freezing. Wide variations are common, with temperatures of +35°C in summer and -20°C in winter not being very unusual.

The Czech Republic can be rightly called the crossroads of European civilizations. It is situated approximately in the geographical centre of Europe and has an area of 78,866 sq. km. It is landlocked





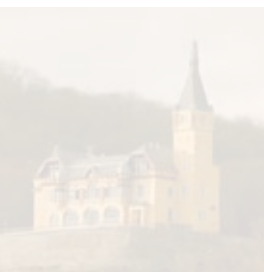
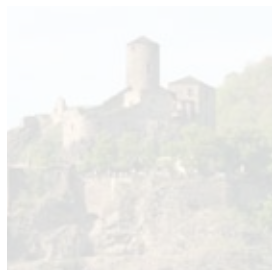
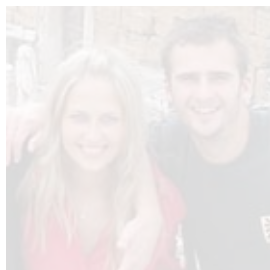
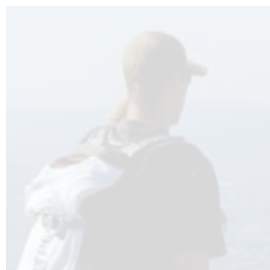
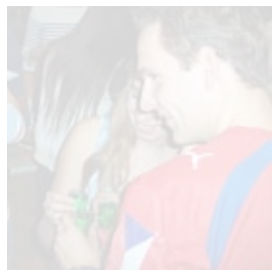
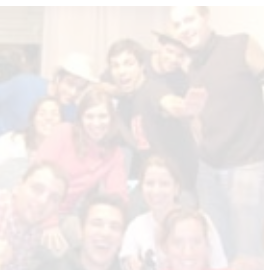
country 326 km from the Baltic and 822 km from Adriatic sea. It shares borders with Germany, Poland, Austria and Slovakia. The highest point of elevation is the peak of Mt. Sněžka (1,602 m above -sea level) and the lowest point of elevation is near Hřensko where the River Labe leaves the Czech territory (117 m above -sea level).

Some sites in the Czech Republic listed in UNESCO'S World heritage Fund:

Praha, Kutná Hora, Český Krumlov, Telč, Lednice-Valtice area, Zelená Hora Church of St. John Nepomuk, Castle and gardens of Kroměříž, Holašovice, Litomyšl castle, Holy Trinity Column in Olomouc, Tugendhat Villa in Brno, The Jewish Quarter and St. Procopius Basilica in Třebíč.

SOME HISTORICAL DATA

- End of the 5 th and beginning of the 6th century – arrival of Slavs in present-day Moravia and Slovakia.
- Second half of the 9th century – arrival of Christian missionaries.
- 1306 – a gradual strengthening of the Czech state during the reign of the Premyslid dynasty. 1346–1378 – the peak in prestige and power of the Kingdom of Bohemia during the reign of Charles IV.
- Beginning of the 15th century – a crisis of state leads to the Hussite movement.
- 1526 – the Habsburg dynasty succeeds to the throne of Bohemia – the formation of a multinational empire.
- 1620 – the defeat of the Bohemian Estates at the Battle of the White Mountain, continued centralization of the Habsburg Empire.
- 1918, October – foundation of an independent state of Czechs and Slovaks (Czechoslovakia).
- 1939, March – 1945, May – German occupation.



**Jan Evangelista Purkyně University in Ústí nad Labem
Czech Republic**

**FOREIGN STUDENT GUIDE
Academic Year 2009/2010**

www.UJEP.cz/en

- 1948, February - Communist takeover.
- 1968, August - Soviet led invasion of Czechoslovakia by Warsaw Pact countries brings an end to the "Prague Spring" and the Communist Party's attempt to build "Socialism with a human face".
- 1989, November - fall of the Communist regime.
- 1993, January - Czech Republic founded after the split of Czechoslovakia.
- 2004, May - Czech Republic becomes member of the European Union.

